

ROTHSCHILD
• S A F A R I S •

AFRICA | ASIA | SOUTH AMERICA | PACIFIC



TOURING THE
GALAPAGOS



THE MAGICAL GALÁPAGOS

ROTHSCHILD
SAFARIS

LUXURY GALÁPAGOS CRUISES

Inspiring Charles Darwin to write *The Origin of Species*, the Galápagos are home to numerous species found nowhere else in the world.

With predation incredibly low, wildlife is abundant, and much of it quite at ease with its human visitors. Penguins, sea lions, iguanas and giant tortoises can be found on land, hammerhead and whale sharks, turtles and manta rays in the ocean, and in the air, hawks, frigate birds and the lovable tap-dancing blue-footed booby.

The best way to enjoy the islands is aboard a yacht on one of several Galápagos cruises, staying on board and traveling throughout the archipelago, diving in the clear, warm ocean and taking trips ashore from your luxury floating accommodation.

From your floating hotel, you are able to take trips to shore to walk amongst the wildlife or explore the underwater world, stand-up paddleboarding on the surface or snorkeling and scuba diving beneath the waves.

QUICK FACTS:

- 97% of the Galápagos is designated National Park, with surrounding waters named a UNESCO Biosphere Reserve
- They are the only place in the northern hemisphere that you can see penguins in the wild
- The name 'Galápagos' refers to the old Castilian word for 'riding saddle', in reference to the shell of the giant tortoise
- The Galápagos giant tortoise frequently lives well beyond 100 years
- The native species have rarely been hunted and land predators are scarce, thus much of the wildlife has little fear of humans
- The Galápagos sit on the nexus of three tectonic plates & continue to be volcanically active

ROTHSCHILD SAFARIS

USA 800.405.9463 | AUS 61 (7) 5455.4243 | www.rothschildsafaris.com | info@rothschildsafaris.com



— PACKING FOR THE GALÁPAGOS —

PACKING FOR THE GALÁPAGOS

Attire for your Galápagos journey should be comfortable and casual. There is rarely a dress code, though some guests sometimes prefer to be a little more elegant for dining, with a dress or buttoned shirt.

Towels and robes are invariably provided, as too are wetsuits for water activities. Your room will also be supplied with bathroom cosmetics, though you may wish to bring your own. If so, please ensure that they are natural and biodegradable, and that you remove excess packaging to minimize waste.

Vessels will often provide each room with a set of binoculars, some may even have a supply of walking poles and other equipment, so be sure to check inclusions before packing.

Most items will be more to your preference than specific guidelines, though neutral colors are better suited to hiking and nature watching. Your existing wardrobe is likely to be adequate, though some additional items may be useful to purchase. There are, however, a few specific items to consider:

• Sun hat or cap	• Rash guard / swim shirt
• Lightweight jacket	• 2-3 bathing suits
• Light waterproof jacket	• Underwater camera*
• Walking shoes or boots	• Motion sickness medication
• Closed-toe waterproof shoes	• Insect repellent (natural)
• Rubber-soled boat shoes	• Reef-safe sunscreen
• Small day backpack	• Earplugs (if you are sensitive to noise)
• Waterproof bag for camera*	

*Optional

ROTHSCHILD SAFARIS

USA 800.405.9463 | AUS 61 (7) 5455.4243 | www.rothschildsafaris.com | info@rothschildsafaris.com



GALÁPAGOS CLIMATE

THE GALÁPAGOS CLIMATE

Almost spanning the equator, the Galápagos enjoy a relatively consistent annual climate, with temperatures varying less than 10 degrees across the year. Seasons are divided into wet and dry, although there is some precipitation throughout the year, and even the wettest times are far from monsoonal.

The Galápagos is a year-round destination, though the months of May, June, September and October are often preferred. Temperatures are wonderfully pleasant at these times, the water is warm, and softer winds provide smoother sailing and improved diving and swimming conditions.

JAN	FEB	MAR	APR	MAY	JUN	JUL	AUG	SEP	OCT	NOV	DEC
Max. Air Temperature (°F / °C)											
84 / 29	86 / 30	88 / 31	86 / 30	82 / 28	78 / 26	76 / 24	74 / 23	76 / 24	77 / 25	78 / 26	80 / 27
Min. Air Temperature											
70 / 21	74 / 23	74 / 23	72 / 22	72 / 22	68 / 20	66 / 19	64 / 18	62 / 17	64 / 18	66 / 19	68 / 20
Avg. Sea Temperature											
74 / 23	76 / 24	76 / 24	76 / 24	74 / 23	74 / 23	72 / 22	66 / 19	68 / 20	70 / 21	72 / 22	74 / 23
Avg. Rainfall (inches)											
1	1	2	1.5	0.75	0.25	0.5	0.25	0.50	0.25	0.50	0.50



WHICH VESSEL?

ROTHSCHILD
SAFARIS

THE BOATS OF THE GALÁPAGOS

We have handpicked only the best cruise options in the Galápagos, focusing on what's important to us and our clients. The boats we recommend vary in size from only 16 people right up to 100, with sleek, comfortable interiors and carefully-selected naturalists all with over 5 years experience guiding our clients, they all offer a multitude of excursions for you to enjoy. Below is a brief summary of some of our favorites in no particular order.



AQUA MARE

A true superyacht with designer Italian finishes throughout. Each of the 8 suites are complete with exclusive steward service, extravagant indoor and outdoor social spaces, elegant finishing, and immaculate attention to detail, making it the ultimate retreat while exploring the dramatic volcanic landscapes of the Galápagos Archipelago. With a 1:1 ratio of crew and guests, and two naturalists per cruise, their military-grade tenders take you to every nook and cranny of the islands in comfort and style. Rates vary based on room type however start at approximately \$9,000 per person sharing for 7 nights.

ORIGIN & THEORY

Family owned and operated, these are the only Relais & Chateaux-accredited boats in the Galápagos. Onboard, chic interiors highlight local craftsmanship, and a cozy library with rare publications by Charles Darwin and a luxury boutique offer entertainment. The onboard experience is matched only by the incomparable beauty of the islands you'll visit.

Each of the 10 spacious staterooms has panoramic views of the ocean, climate control and the finest cotton. Rates start at \$9,000 per person sharing for 7 nights.

ROTHSCHILD SAFARIS

USA 800.405.9463 | AUS 61 (7) 5455.4243 | www.rothschildsafaris.com | info@rothschildsafaris.com



WHICH VESSEL?



CELEBRITY FLORA

Our largest recommendation in terms of passenger numbers, this cruise ship was custom-built for the Galápagos and fits 100 guests. Every room on board is a suite, featuring incredible design features and indulgent services and amenities that make unwinding after a day of adventures in the islands easier than ever.

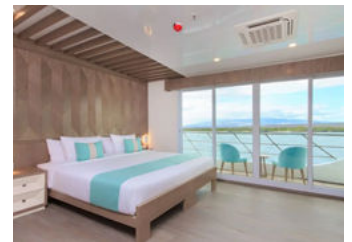
All suites are designed to face outwards and have private exterior space. Rates are approximately \$11,500 per person sharing for 7 nights.



MC ENDEMIC

The Endemic and its sister cruises are the best options available for 4-5-night cruises encompassing the highlights of the Eastern islands of Santa Cruz, la Española, Charles Darwin and San Cristobal. They also offer the most competitive pricing for solo travelers with custom-designed single cabins.

All 8 cabins are ensuite with panoramic views, air conditioning and exterior balconies. Rates start at \$5,390 per person sharing for a 4-5 night itinerary.



ROTHSCHILD SAFARIS



— WHICH VESSEL? —



LA PINTA

Accommodating up to 48 guests, this is the perfect mid-size yacht for travelers looking for a sophisticated, upscale experience of the islands. Ideal for families due to the many interleading cabins available, it offers ample social space on board to relax and enjoy your time between excursions.

Their expertly-crafted itineraries allow for comprehensive coverage of the Galápagos with multiple naturalist guides on board, allowing you the freedom to choose from a wider range of activities each day, instead of a prearranged itinerary and schedule. Rates start at \$5,225 per person sharing for a 5-night itinerary.





ROTHSCHILD
SAFARIS

ACTIVITIES AND EXCURSIONS

Every day is different in the Galápagos, and each vessel will have its own selection of excursions and activities.

Vessels usually sail through the night to reach a new destination to explore in several ways:

ISLAND EXCURSIONS

Each island has its own attractions, from superb diving to fascinating fauna. Your vessel will anchor offshore, transporting you to the island by Zodiac. Some landings may be wet, so it is advisable to wear waterproof, covered-toe shoes with good grip. Once ashore, your naturalist guide will escort you on a designated route, highlighting features and creatures along the way.

WATER ACTIVITIES

Each vessel will provide its own selection of equipment, so your choice of water activities will vary accordingly. Typically, most vessels will provide you with snorkeling equipment and a wetsuit. Regardless of how warm the water may be, wetsuits provide valuable sun protection and prevent you from getting cold, as water conducts heat away from the body four times faster than air.

Kayaks are invariably included. These allow you the opportunity to enjoy the ocean at your own pace. As with all water activities, a calmer area will be selected for your safety and ease. From a kayak, it is possible to enjoy the coastline, spot sea lions swimming beneath the surface and popping their heads up, and observe seabirds undisturbed by your silent approach.

Some vessels may also have stand-up paddleboards. These can be a little bit tricky (though very safe and fun) to master, but give you a more elevated perspective from which you can better view waterlife.

A note on SCUBA diving: Many vessels don't include SCUBA diving in their activities and don't possess the equipment. Even if you are appropriately certified and provide your own equipment, vessels often aren't licensed to allow this activity.

If you wish to SCUBA dive in the Galápagos, it is recommended that you add an extra day or two to your itinerary, returning to the main island of San Cristobal to join a licensed SCUBA diving day trip.



BEYOND THE GALÁPAGOS



QUITO EXTENSION

International flight schedules will require you to arrive a day before your cruise.

We recommend extending your time in Ecuador by at least a couple of nights, giving you the opportunity to explore Quito's rich history and culture, whether by foot or through a local cooking class with our highly-qualified, hand-picked specialist guides.

Other nearby destinations include Otavalo where Quichua indigenous culture thrives and boasts the country's most famous craft market. Cotopaxi National Park and the snowcapped volcanoes of Antisana, and the Pappallacta hot springs also lay a short drive away.



PERU EXTENSION

Given its proximity to Ecuador and the excellent flight connections, many enjoy combining the two countries on an impactful journey to two UNESCO World Heritage Sites; Machu Picchu and the Galápagos.

The iconic mountaintop citadel is a true wonder of the world, a whisper remaining from a civilization we know precious little about.

Machu Picchu's closest city of Cusco, also perched high in the Andes, is equally as beguiling, and taking the opportunity to explore its alleyways and marketplaces, meet locals and purchase authentic, traditionally-crafted items is highly recommended.